



Swansea University Prifysgol Abertawe

Applied Linguistics (Lexical Studies)

Winter 2020 Newsletter



Contents

News from the Network

Quote of the month

Dates for your diary

Study tips and resources

Task for this month

Webpage of the month

Dear students, friends and colleagues,

Greetings from Swansea, and welcome to the Winter edition of the Applied Linguistics (Lexical Studies) newsletter.

First, apologies for the absence of the Newsletter in recent months. A perfect storm of retirements, restructurings and the all-consuming impact of Covid-19 on the teaching world, made the autumn term a particularly challenging one – and not only in Swansea, of course. However, service has now resumed, and as you will see, we have accumulated quite a list of news items for you. Thank you to those who have got in touch to ask about the newsletters; we are simultaneously sorry to have deprived you of a couple of editions and heartened to hear that you look forward to them.

We have all been working from home since March, aside from occasional forays onto campus for on-site teaching sessions. Zoom, Teams, e-mail and (from time to time) telepathy seem to have kept us closely connected, and our students have stepped up to the plate, reinvigorating the Applied Linguistics society, and joining us for “App Ling Monday” virtual lunch meetings outside the teaching term. Our departmental chat saw a lively exchange of botanical and landscape photos over the summer and autumn, and we share some of these with you at the end of the newsletter.

We very much hope that you and yours are, and remain, safe and well. We wish everyone solace, peace and rest over the Christmas / New Year break, to sustain us as we venture into 2021.

Nadolig Llawen a Blwyddyn Newydd Dda,

Tess and Cornelia

News from the Network

- September 2020 saw the retirement of our long-time colleague Jim Milton. Jim notched up 35 years of service to the University, and it is thanks to him that Paul Meara, the Lexical Studies network (aka Paul's Vocabulary Acquisition Research Group – VARG), and the distance PhD programme, were established in Swansea. Jim's legacy includes a huge amount of empirical vocabulary research, a global alumni group of PhD graduates, and Swansea's English Language Training Service and Applied Linguistics Department – both of which emerged from the Centre for Applied Language Studies, founded by Jim. We wish him a happy and fulfilled retirement.
- Steve Morris too has retired from University service this autumn. Steve's expertise in Welsh language, sociolinguistics and language pedagogy has extended the reach and scope of the Lexical Studies network in important ways. Officially a member of the Welsh Department at Swansea, since coming to the 2010 Lexical Studies conference in Gregynog Steve has been a loyal friend to the applied linguistics team at Swansea. We are delighted that he has now been awarded an Honorary Researcher position as a formal member of the Applied Linguistics department.
- In January 2021 we welcome the latest new PhD student to our programme. Angela Fenu works as a speech-and-language pathologist, and will be investigating the potential of applied linguistics methodologies to identify lexical access impairments in patients with language and communication disorders. She will be supervised by Tess and Federica, as her first and second supervisors respectively, and we are very much looking forward to working with her – Croeso, Angela!
- We are delighted to announce the launch, this autumn, of the new [National Corpus of Contemporary Welsh](#) – CorGenCC - [Corpws Genedlaethol Cymraeg Cyfoes](#). CorGenCC is an 11-million word corpus, and is the first to include naturally occurring written, spoken, and e-language Welsh. The four-year project to build the corpus and related tools was funded by the ESRC and AHRC, and was a collaboration between Swansea and three other universities (Cardiff, Bangor, Lancaster), and many community stakeholders. Dawn Knight led the project, supported by Steve Morris and Tess Fitzpatrick as the project creation/management team. Dawn, Steve and Tess would like to thank everyone who contributed, directly or indirectly, to the completion of this project – you can see the full team at <https://www.corcencc.org/people/> - and would like to give a special shout-out to Laurence Anthony and Bethan Tovey-Walsh, whose extraordinary efforts in the last couple of months ensured that we made it over the finishing line.
- Our PhD student Chloe Mills was elected to the British Association for Applied Linguistics committee as Postgraduate Officer in September. This is great news for Chloe and for BAAL: Chloe has brought immense energy, creativity and collegiality to our academic community here at Swansea, and she has already brought new initiatives and approaches to the BAAL scene. Paul Meara, Ann Ryan, Jim Milton, Tess Fitzpatrick and Steve Morris have all served on the BAAL committee in the past, and Dawn Knight is currently Chair; we are so pleased to see Chloe continue this close link between Swansea/Wales and the wider applied linguistics community.

- Current PhD students will no doubt recognise some of the ‘Pandemic PhD’ challenges that Chloe notes in [this post](#) to the Applied Linguistics blog. While you’re there, do take a look at the rest of the blog – our students, colleagues and blog co-ordinator Alexia Bowler keep it well populated!
- Congratulations to Lexical Studies PhD alumni Dale Brown and Jeff Stewart, who with co-authors Tim Stoeckel and Stuart Mclean, have published ‘The Most Appropriate Lexical Unit for L2 Vocabulary Research and Pedagogy: A Brief Review of the Evidence’ in *Applied Linguistics* - accessible via ‘Advance articles’ <https://doi.org/10.1093/applin/amaa061>

Quotes of the season

- From a Wikipedia entry (as found in [The Guardian](#)):
“The ‘Scots’ that wis uised in this airticle wis written bi a body that’s mither tongue isna Scots. Please impruive this airticle gin ye can.”
- From the [OED](#) ‘As our Word of the Year process started and this data was opened up, it quickly became apparent that 2020 is not a year that could neatly be accommodated in one single “word of the year”’ - see also ‘this month’s webpages’ below.

Dates for your diary

- On 29 January 2021, 14:00-16:00, The Free University of Bozen-Bolzano, with TESOL Italy Val d’Adige Local Group will host an online lecture and workshop with the theme: lexical perspectives on language learning and teaching. Tess Fitzpatrick will present on “Obstacles and Enablers in Language Education – lessons from a new national curriculum”, followed by a workshop from Andrew Wimhurst on “how word frequency (WF) might inform vocabulary teaching and learning.” To participate, please sign up at this [registration link](#) by 22 January.
- The CALL conference has a deadline for submission of abstracts on 30 January 2021. The conference website and submission system are available on www.call2021.org.
- Catherine Richards is organizing another EALTHY conference, with a deadline for submissions on 15 February 2021. EALTHY is dedicated to the teaching and learning of English for medicine and healthcare. Details can be found here: <https://www.englishforhealthcare.com/>
- As you may have anticipated, the 2021 Lexical Studies conference will be somewhat different from usual. It will be online, and we have decided to limit participation to our current PhD students and supervision teams, plus guest speakers. This is to enable us to maximise focussed support and engagement opportunities for our students, and to address specific challenges presented by the pandemic that relate to PhD work itself, and also to the new work/life contexts in which we are studying (for part-time students in particular). The online conference will take place on 8, 9 and 10 March, at approximately 08:00-12:30 each day (UK time). We will contact students in due course with more details, including sign-up instructions.

Study tips and resources

You will know that Swansea University switched its LMS from Blackboard to Canvas this year. Students, please make sure you are comfortable with this new environment, and can navigate to the pages you need. You can consult the Canvas Help & Support pages [here](#).

Some of our PhD students have recommended the Manchester phrasebank here <http://www.phrasebank.manchester.ac.uk/> (thanks, Vivienne, Tesni and Afnan)

They also recommend a Youtube series of videos by LUND university on academic writing. The first one is at <https://www.youtube.com/watch?v=1pE-ohVy9e0>

For tips on poster design, take a look at <https://blogs.lse.ac.uk/impactofsocialsciences/2018/05/11/how-to-design-an-award-winning-conference-poster/>

Task for this month

We thought it would be nice to hear from all of you, but especially the new doctoral students, about something that you have read in the past twelve months or so that really impressed you. So please choose a publication related to lexical studies and send us the reference along with a very short summary (75-150 words) and your informal comments (another 75-150 words)

Please submit to Cornelia at c.tschichold@swansea.ac.uk by 31 January 2021.

This month's webpages

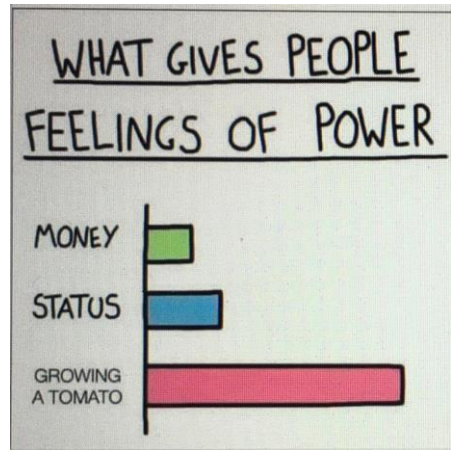
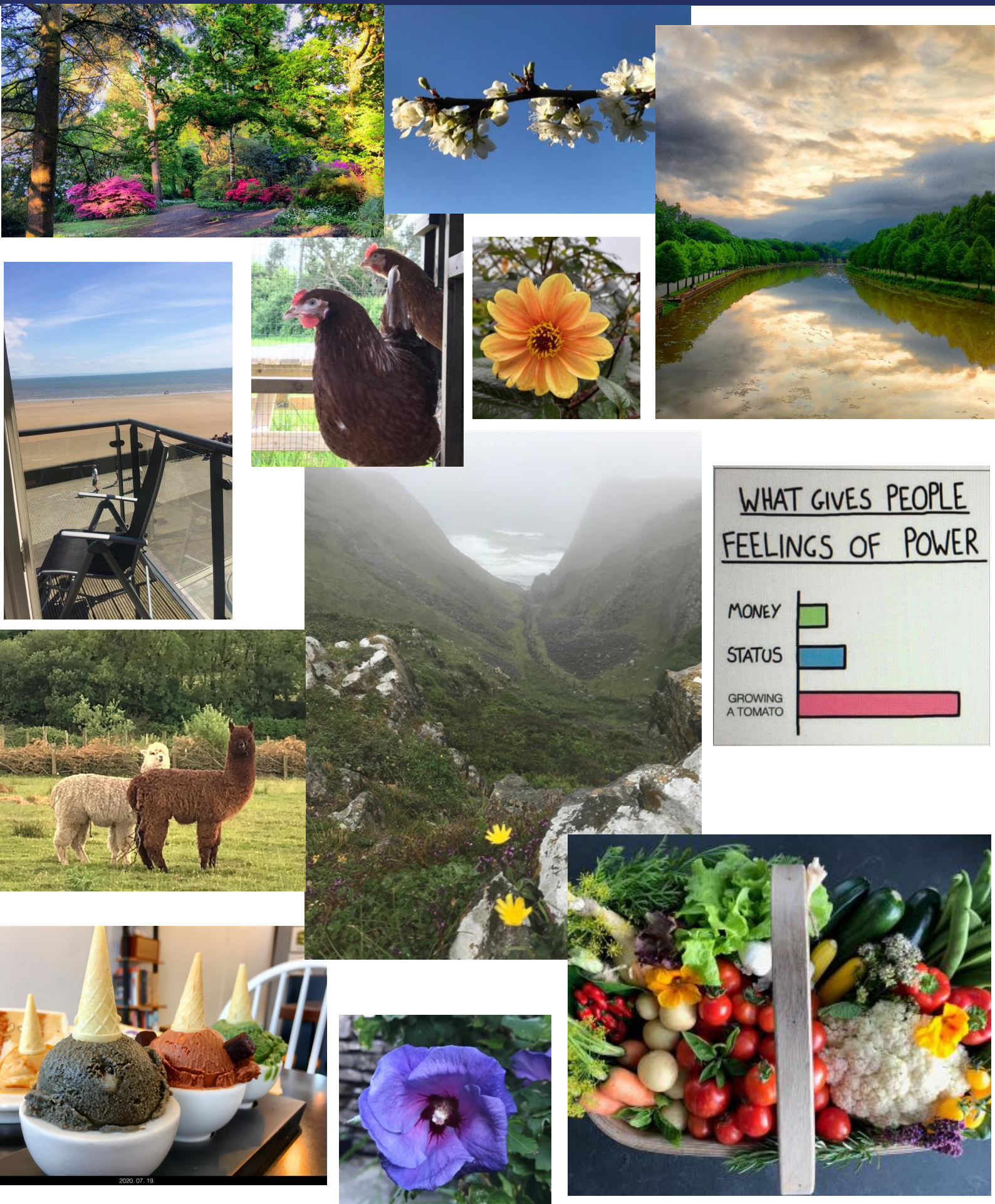
Many of you will have done a replication study for your PhD. This makes you a prime target audience member for this short [survey](#) by Kevin McManus, on the attitudes and practices of researchers in the field of second language research towards replication studies.

And if you need to google anything on replication studies, and wonder why the results are what they are, perhaps you'll find [this piece on Google's autocomplete predictions](#) interesting.

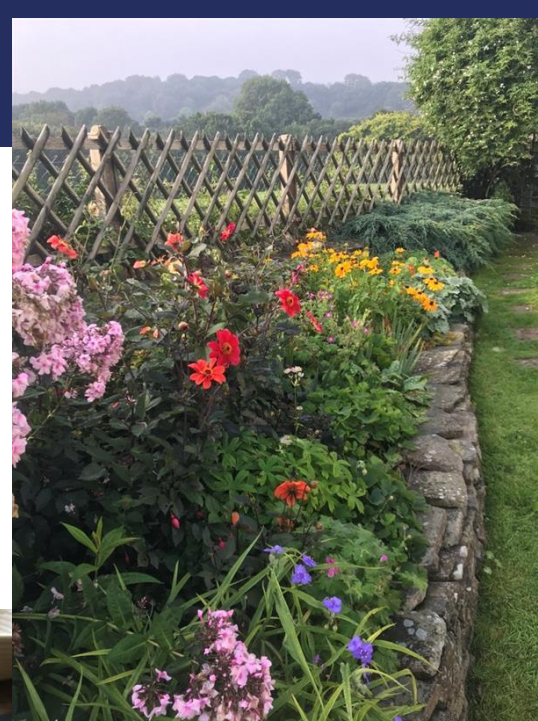
The OED [report](#) on their abandoned attempt to find a single "Word of the Year 2020" makes for interesting reading (you might like to try predict their set of ~50 contender words).

Stay safe, stay well, stay in touch...

...and enjoy the following 'photos of 2020' from the Swansea team – we hope they bring you a touch of consolation and optimism, as they did us.



Swansea PhD Applied Linguistics



**My virtual classes are so similar to seances...
... Mark are you here...?
... Mark answer me if you're here with us...**

